

# InterSeeder Technologies Operators Manual



InterSeeder Technologies LLC. • P.O. Box 33,  
Woodward, PA 16882

©2015 InterSeeder Technologies LLC.  
All Rights Reserved. Privacy  
InterSeeder™

# Before you start

- ✓ Please read and understand this manual before using your InterSeeder
- ✓ Make sure your aware of all the safety warnings on the InterSeeder
- ✓ Always use the jack stands when unhooking the unit and when servicing
- ✓ Always use the cylinder locks when servicing in the raised position
- ✓ Never crawl under the unit in the raised position
- ✓ Stay clear of moving parts
- ✓ Never ride on the unit
- ✓ Do not turn tightly with the unit when planting in the down planting position
- ✓ Grease the unit each day of use and oil chains weekly
- ✓ Check oil level in the seed box transmission daily

# Transporting

- ✓ Always transport the unit in the raised position, use the transport locks on each cylinder
- ✓ Remove the wheel lock on the rear wheels to allow the wheels to caster 360 degrees
- ✓ Always plant with the wheels in the unlocked position
- ✓ Travel at a safe speed < 20 MPH



Lift handle up  
to unlatch  
wheels

# Hitching to the tractor

- ✓ Use an appropriate sized tractor with ample front end weight
- ✓ 4 row machine 70 – 90 hp, 6 row machine 110 -130 hp
- ✓ This unit is a semi-mount hitch
- ✓ **ONLY USE THE DRAFT ARMS OF THE TRACTOR , DO NOT USE THE CENTER LINK**
- ✓ Only use the center link on the 2 row model
- ✓ Remove as much lateral movement as possible on your 3 point hitch
- ✓ Couple the hydraulic lines to the tractor remote as a **set** not as individuals
- ✓ Stand clear of the hitch and unit when hitching



# Leveling the InterSeeder

- ✓ The unit performs best when it sets level from hitch to transport wheels
- ✓ On the 4 and 6 row units set the tractor hitch to the float position and lower the transport wheels on the rear
- ✓ On the 2 row, use the center link to achieve a level setting, set tractor hitch to float
- ✓ With the opening coulters on the ground use the transport wheels to level the unit
- ✓ The opening coulters should run either at the same level as seed depth or slightly deeper
- ✓ Once the unit is level, use cylinder stops on the 4 and 6 row to maintain planting position
- ✓ If the units tips towards the tractor in operation, raise tractor hitch slightly



Level  
from here  
to here

# 6 Row Gauge Wheels



Mount wheels here

- ✓ Gauge wheels are removed for transport and need to be remounted
- ✓ Center between corn rows 1 and 2, 5 and 6. Count in 4 units from each end set up as an *interseeder* and mount wheels directly in front of the fourth row unit.
- ✓ Adjust slightly to avoid tank mounts
- ✓ Wheels can be optional as well depending on soil conditions, use your judgment

# Leveling the InterSeeder

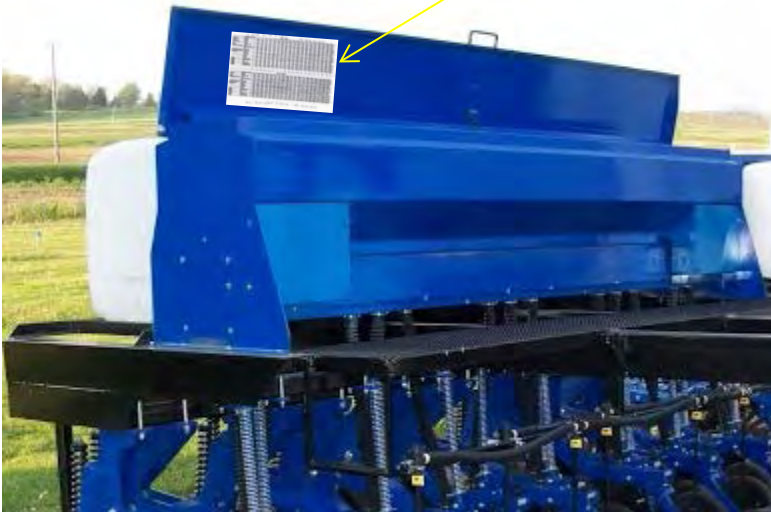


Insert cylinder stops here to assist with leveling if needed

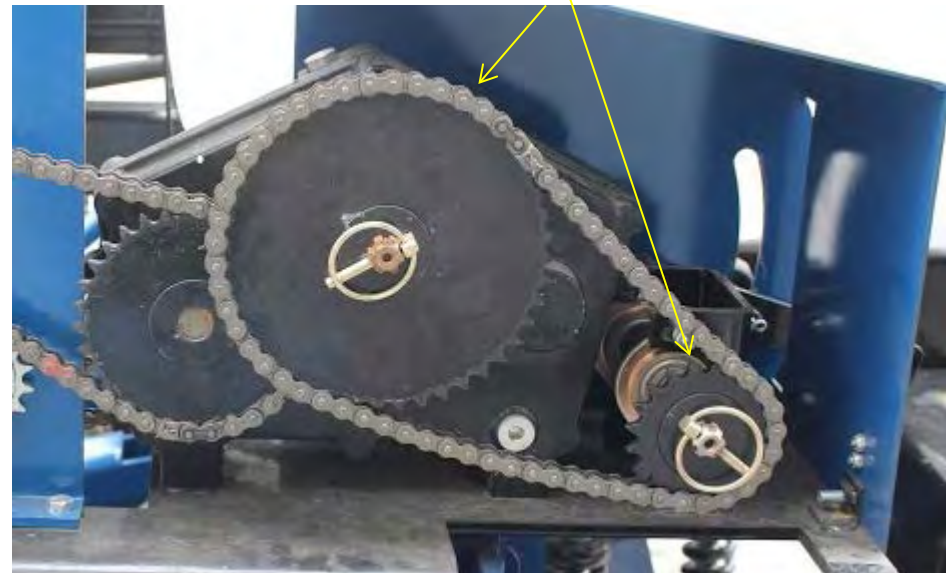
# Seed Settings

- ✓ **CALIBRATE YOUR INTERSEEDER FOR THE BEST RESULTS**
- ✓ The seed chart is only a **starting point**, seed size will vary and effect rates
- ✓ There is a high and low range drive on the seed box , see seeding chart for drive type
- ✓ Use the lever on the seed box transmission to set seeding rate

Seed chart is located under the seed box lid



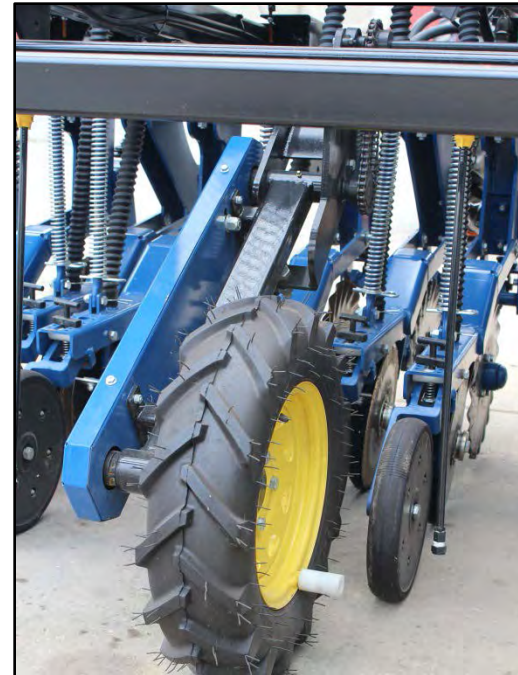
High and low range gears are interchangeable, look for the door sticker to indicate which range





# Calibration as a grain drill

- ✓ Accurately measure 200 ft, drive the unit and count the revolutions of the drive wheel
  - ✓ Multiply the width of the machine by the length traveled
  - ✓ EXP -  $15 \text{ ft} \times 200 = 3000 \text{ sqft}$  / ( $43560 \text{ sq ft}$  in an acre) = .068 of an acre
  - ✓ Place a tarp under the drill and prepare to catch the seed from the entire unit
  - ✓ Make sure the metering units are charged with seed / turn the drive wheel several time prior to catching seed on tarp
  - ✓ Now turn drive wheel the amount of turns in 200 feet and catch all of the seed and weigh
  - ✓ Remember there is 453grams in 1lbs for conversion if needed
- 
- ✓ Take the weight of the collected seed for example 2.3 lbs divide by percentage of an acre from above  $2.3 / .068 = 34 \text{ lbs}$  of seed per acre



# Calibration as an InterSeeder

Here is a quick way to accurately calibrate the InterSeeder for your cover crop seeds. Keep in mind that seed sizes do vary among cover crop species. To get an accurate calibration we recommend you calibrate for each species you use. When using a mix we typically will set the calibration based on the species that dominates the mix. **For example, annual rye grass and red clover with a 60/40 mix at 20lbs/acre, we would calibrate for annual rye at 20lbs/acre.**

To calibrate is simple and takes about 15 minutes. First, measure off 100 feet setting a flag at the start and stop locations. Next, drive your tractor pulling the unit from the start location to the stop location and count the revolutions of the drive wheel using the white handle as a reference. Write down your drive wheel rpm for future reference, you will manually turn the drive wheel for calibrating in the next step. Now, remove 3 seed tubes next to one another. Add seed to the seed box and rotate the drive wheel until seed come out of each seed tube. Place a clean container under the seed tubes and turn the drive wheel the number of revolutions per 100ft and weigh the seed. For 30 inch corn rows the calibration formula is;

30 inch or 2.5ft X 100 ft = 250 square feet (This represents the area with in a thirty inch wide corn row 100 ft long.)

453 grams in 1 lb you will need to covert.

10 lbs seed /acre X 453 grams = 4350 grams

4350/43560 = .104 grams seeds per square foot in 1 acre

.104 g X 250 = 26 grams per 250 square feet which is the area you measured off

So for every 1 lb of cover crop seed desired per acre, you will need 2.6 grams of seed collected from 3 seed tubes.

# Seed Chart for grain drill operation, drive wheel turns 710 times per acre

11 ROWS

LOW RANGE

710 turns Per acre

GEARBOX SETTING	2	4	6	8	10	12	14	16	18	20	22	24	26	28	30	32	34	36
COATED ALFALFA	5.8	7.1	8.8	10.4	11.9	13.9	15.6	17.6	19.5	21.9	24.1	26.3	28.7	31.3	33.8	36.4	39.4	42.4
UNCOATED ALFALFA	4.0	5.1	6.4	7.5	8.6	10.0	11.4	12.7	14.1	15.8	17.4	18.9	20.7	22.5	24.3	26.2	28.4	30.5
HAKARI BROME	2.3	3.0	3.7	4.3	5.0	5.8	6.8	7.3	8.2	9.1	10.1	11.0	12.0	13.1	14.1	15.2	16.4	17.7
COATED RED CLOVER	5.5	7.1	8.8	10.4	11.9	13.9	15.8	17.6	19.5	21.9	24.1	26.3	28.7	31.3	33.8	36.3	39.4	42.3
TALL FESCUE	3.1	4.0	5.0	5.8	6.7	7.8	8.9	9.9	11.0	12.3	13.6	14.8	16.2	17.6	19.0	20.5	22.2	23.9
PERUM FESTULOLIUM	3.3	4.1	5.2	6.1	7.0	8.1	9.3	10.3	11.4	12.8	14.1	15.4	16.8	18.3	19.8	21.3	23.1	24.8
EVERLEAF FORAGE OATS	4.3	5.5	6.9	8.1	9.3	10.9	12.4	13.8	15.3	17.1	18.9	20.8	22.5	24.5	26.5	28.5	30.9	33.2
ORCHARD GRASS	2.0	2.6	3.2	3.7	4.3	5.0	5.7	6.3	7.0	7.9	8.7	9.5	10.3	11.3	12.2	13.1	14.2	15.3
RYE	8.2	10.4	13.0	15.3	17.6	20.5	23.3	25.9	28.8	32.3	35.5	38.7	42.3	46.1	49.8	53.6	58.1	62.5
TETRAPLOID ITALIAN RYEGRASS	3.8	4.6	5.8	6.8	7.8	9.1	10.3	11.5	12.8	14.3	15.7	17.2	18.7	20.4	22.1	23.8	25.7	27.7
DIPLOID PERENNIAL RYEGRASS	2.8	3.5	4.4	5.2	5.9	6.9	7.9	8.8	9.7	10.9	12.0	13.1	14.3	15.6	16.8	18.1	19.6	21.1
SORGHUM SADAN	6.8	8.6	10.7	12.6	14.5	16.9	19.2	21.4	23.8	26.6	29.3	32.0	34.9	38.0	41.1	44.2	47.9	51.3
SOYBEANS	6.0	7.6	9.5	11.2	12.8	15.0	17.1	19.0	21.1	23.6	26.0	28.3	30.9	33.7	36.4	39.2	42.5	45.7
TIMOTHY	5.4	6.8	8.5	10.0	11.5	13.4	15.3	17.0	18.8	21.1	23.2	25.3	27.7	30.1	32.6	35.1	38.0	40.9
TRITICAL	6.0	7.7	9.6	11.3	12.9	15.1	17.2	19.1	21.2	23.8	26.1	28.5	31.2	34.0	36.7	39.5	42.8	46.0
WHEAT	7.2	9.2	11.4	13.4	15.4	18.0	20.5	22.8	25.3	28.4	31.2	34.0	37.2	40.5	43.7	47.1	51.0	54.9
RINGS ALFAMATE MIX	2.4	3.1	3.8	4.5	5.2	6.0	6.9	7.6	8.5	9.5	10.4	11.4	12.4	13.5	14.6	15.8	17.1	18.4
RINGS HILLSIDE MIX	2.7	3.4	4.3	5.0	5.8	6.7	7.7	8.5	9.5	10.6	11.7	12.7	13.9	15.1	16.4	17.6	19.1	20.5
RINGS MIX	2.5	3.1	3.9	4.6	5.3	6.2	7.0	7.8	8.7	9.7	10.7	11.6	12.7	13.9	15.0	16.1	17.5	18.8
RINGS OATS PLUS	4.4	5.6	6.9	8.1	9.3	10.9	12.4	13.8	15.3	17.2	18.9	20.6	22.5	24.5	26.5	28.5	30.9	33.2
RINGS SUPREME MIX	2.6	3.4	4.2	4.9	5.6	6.6	7.5	8.3	9.2	10.4	11.4	12.4	13.6	14.8	16.0	17.2	18.6	20.0
RINGS TRITICAL PLUS	5.3	6.7	8.4	9.8	11.3	13.2	15.0	16.7	18.5	20.8	22.8	24.9	27.2	29.7	32.0	34.5	37.4	40.2

L  
B  
S  
P  
E  
R  
A  
C  
R  
E

HIGH RANGE

GEARBOX SETTING	4	6	8	10	12	14	16	18	20	22	24	26	28	30	32	34	36	38	40
HAKARI BROME	18.7	21.9	25.2	29.3	33.4	37.2	41.3	45.3	50.9	55.5	60.6	66.1	71.4	76.9	83.3	89.8	95.8	102.8	110.2
TALL FESCUE	25.2	29.6	34.0	39.6	45.1	50.1	55.7	62.4	68.6	74.9	81.8	89.2	96.3	103.7	112.3	120.8	129.3	138.7	148.7
PERUM FESTULOLIUM	26.2	30.7	35.3	41.2	46.9	52.2	58.0	64.9	71.4	77.9	85.1	92.7	100.1	107.8	116.8	125.6	134.4	144.3	154.6
EVERLEAF FORAGE OATS	35.0	41.1	47.2	55.0	62.7	69.7	77.5	86.8	95.5	104.1	113.8	124.0	133.9	144.2	156.2	168.0	179.8	192.9	208.7
ORCHARD GRASS	16.1	18.9	21.7	25.3	28.9	32.1	35.7	39.9	43.9	47.9	52.4	57.1	61.8	66.4	71.9	77.3	82.7	88.8	95.1
RYE	66.0	77.4	89.0	103.7	118.1	131.3	145.9	163.4	179.8	196.1	214.2	233.5	252.1	271.5	294.2	316.3	338.5	363.3	389.3
TETRAPLOID ITALIAN RYEGRASS	29.2	34.3	39.4	45.9	52.3	58.2	64.8	72.4	79.8	86.9	94.9	103.4	111.7	120.3	130.3	140.1	150.0	160.9	172.5
DIPLOID ITALIAN RYEGRASS	22.3	26.2	30.1	35.0	39.9	44.4	49.3	55.3	60.8	66.3	72.4	78.9	85.2	91.8	99.5	107.0	114.5	122.8	131.6
SORGHUM SADAN	54.4	63.8	73.4	85.5	97.4	108.3	120.4	134.8	148.3	161.8	176.7	192.6	208.0	224.0	242.6	260.9	279.2	299.6	321.1
SOYBEANS	48.2	56.6	65.0	75.8	86.4	96.0	106.7	119.5	131.5	143.4	156.6	170.7	184.4	198.6	215.1	231.3	247.6	265.7	284.7
TRITICAL	48.6	57.0	65.5	76.3	87.0	96.7	107.4	120.3	132.4	144.4	157.7	171.9	185.8	199.9	216.6	232.9	249.2	267.5	286.6
WHEAT	57.9	68.0	78.1	91.0	103.8	115.3	128.2	143.5	157.9	172.2	186.1	205.1	221.5	238.5	258.4	277.9	297.3	319.1	341.9
RINGS ALFAMATE MIX	19.4	22.7	26.1	30.5	34.7	38.6	42.9	48.0	52.6	57.6	62.9	68.6	74.1	79.8	86.4	92.9	99.5	106.7	114.4
RINGS HILLSIDE MIX	21.7	25.4	29.2	34.0	38.8	43.1	47.9	53.7	59.0	64.7	70.3	76.7	82.8	89.2	96.6	103.9	111.2	119.3	127.9
RINGS MIX	19.8	23.2	26.7	31.1	35.5	39.5	43.8	49.1	54.0	58.9	64.3	70.1	75.7	81.6	88.4	95.0	101.7	109.1	117.0
RINGS OATS PLUS	35.1	41.2	47.3	55.2	62.9	69.9	77.6	87.0	95.7	104.3	114.0	124.2	134.2	144.5	156.5	168.3	180.1	193.3	207.1
RINGS SUPREME MIX	21.2	24.8	28.5	33.3	37.9	42.1	46.8	52.4	57.7	62.9	68.7	74.9	80.9	87.1	94.4	101.5	108.6	116.5	124.9
RINGS TRITICAL PLUS	42.4	49.8	57.2	66.7	76.0	84.5	93.8	105.1	115.6	126.1	137.8	150.1	162.1	174.6	189.2	203.4	217.7	233.6	250.4

L  
B  
S  
P  
E  
R  
A  
C  
R  
E

Seed chart for interseeding, drive wheel will turn 754 times in 1 acre

15 ROWS + 100' WALK

LOW RANGE

754 turns per acre

GEARBOX SETTING		2	4	6	8	10	12	14	16	18	20	22	24	26	28	30	32	34	36	
COATED	ALFALFA	4.5	5.8	7.2	8.4	9.7	11.3	12.9	14.3	15.9	17.8	19.6	21.3	23.3	25.4	27.4	29.6	32.0	34	36
UNCOATED	ALFALFA	3.3	4.1	5.2	6.1	7.0	8.1	9.3	10.5	11.4	12.8	14.1	15.4	16.8	18.3	19.8	21.3	23.1	24.8	26.6
HAKARI	BROME	1.9	2.4	3.0	3.5	4.0	4.7	5.4	6.0	6.6	7.4	8.2	8.9	9.7	10.6	11.5	12.3	13.4	14.4	15.4
COATED RED	CLOVER	4.5	5.8	7.2	8.4	9.7	11.3	12.9	14.3	15.9	17.8	19.6	21.3	23.3	25.4	27.4	29.6	32.0	34	36
TALL	FESCUE	2.5	3.2	4.0	4.7	5.5	6.4	7.2	8.0	8.9	10.0	11.0	12.0	13.1	14.3	15.5	16.6	18.0	19.4	20.7
PERUM	FESTULOLIUM	2.6	3.4	4.2	4.9	5.7	6.6	7.5	8.4	9.3	10.4	11.5	12.5	13.7	14.9	16.1	17.3	18.8	20.2	21.8
EVERLEAF FORAGE	OATS	3.5	4.5	5.6	6.6	7.8	8.8	10.1	11.2	12.4	13.9	15.3	16.7	18.3	19.9	21.5	23.1	25.1	27.0	28.9
	ORCHARD GRASS	1.6	2.1	2.6	3.0	3.5	4.1	4.6	5.2	5.7	6.4	7.1	7.7	8.4	9.2	9.9	10.7	11.5	12.4	13.3
	RYE	6.7	8.5	10.8	12.4	14.3	16.6	19.0	21.1	23.4	26.2	28.9	31.5	34.4	37.5	40.5	43.6	47.2	50.8	54.3
TETRAPLOID ITALIAN	RYEGRASS	2.9	3.8	4.7	5.5	6.3	7.4	8.4	9.3	10.4	11.6	12.8	13.9	15.2	16.6	17.9	19.3	20.9	22.5	24.1
DIPLOID PERENNIAL	RYEGRASS	2.2	2.9	3.8	4.2	4.8	5.6	6.4	7.1	7.9	8.9	9.8	10.6	11.6	12.7	13.7	14.7	16.0	17.2	18.4
SORGHUM	SADAN	5.5	7.0	8.7	10.2	11.8	13.7	15.6	17.4	19.3	21.6	23.8	26.0	28.4	30.9	33.4	35.9	38.9	41.9	44.8
	SOYBEANS	4.9	6.2	7.7	9.1	10.4	12.3	13.9	15.4	17.1	19.2	21.1	23.0	25.1	27.4	29.6	31.9	34.5	37.1	39.7
	TIMOTHY	4.3	5.5	6.9	8.1	9.3	10.9	12.4	13.8	15.3	17.1	18.9	20.6	22.5	24.5	26.5	28.5	30.9	33.2	35.5
	TRITICAL	4.9	6.2	7.8	9.1	10.5	12.2	14.0	15.5	17.2	19.3	21.2	23.2	25.3	27.5	29.8	32.1	34.8	37.4	40.0
	WHEAT	5.8	7.5	9.3	10.9	12.5	14.6	16.7	18.5	20.6	23.0	25.3	27.6	30.2	32.9	35.5	38.3	41.5	44.6	47.7
KINGS	ALFAMATE MIX	2.0	2.5	3.1	3.6	4.2	4.9	5.6	6.2	6.9	7.7	8.5	9.3	10.1	11.0	11.9	12.8	13.9	14.9	16.0
KINGS	HILLSIDE MIX	2.2	2.8	3.5	4.1	4.7	5.5	6.2	6.9	7.7	8.6	9.5	10.3	11.3	12.3	13.3	14.3	15.5	16.7	17.8
KINGS	MIX	2.0	2.5	3.2	3.7	4.3	5.0	5.7	6.3	7.0	7.9	8.7	9.5	10.3	11.3	12.2	13.1	14.2	15.3	16.3
KINGS	OATS PLUS	3.5	4.5	5.6	6.6	7.8	8.9	10.1	11.2	12.5	14.0	15.4	16.7	18.3	19.9	21.5	23.2	25.1	27.0	28.9
KINGS	SUPREME MIX	2.1	2.7	3.4	4.0	4.6	5.3	6.1	6.8	7.5	8.4	9.3	10.1	11.0	12.0	13.0	14.0	15.1	16.3	17.4
KINGS	TRITICAL PLUS	4.3	5.5	6.8	8.0	9.2	10.7	12.2	13.6	15.1	16.9	18.8	20.2	22.1	24.1	26.0	28.0	30.4	32.7	34.9

HIGH RANGE

GEARBOX SETTING		4	6	8	10	12	14	16	18	20	22	24	26	28	30	32	34	36	38	40
HAKARI	BROME	15.2	17.8	20.5	23.8	27.2	30.2	33.6	37.6	41.4	45.1	49.3	53.7	58.0	62.5	67.7	72.8	77.9	83.8	89.6
TALL	FESCUE	20.5	24.0	27.6	32.2	36.7	40.7	45.3	50.7	55.8	60.9	66.5	72.4	78.2	84.3	91.3	98.2	105.0	112.7	120.8
PERUM	FESTULOLIUM	21.3	25.0	28.7	33.5	38.1	42.4	47.1	52.7	58.0	63.3	69.1	75.3	81.4	87.6	94.9	102.1	109.2	117.2	125.6
EVERLEAF FORAGE	OATS	28.5	33.4	38.4	44.7	51.0	56.7	63.0	70.5	77.8	84.6	92.4	100.7	108.8	117.2	126.9	136.5	146.1	156.8	168.0
	ORCHARD GRASS	13.1	15.4	17.7	20.6	23.5	26.1	29.0	32.5	35.7	38.9	42.5	46.4	50.1	53.9	58.4	62.8	67.2	72.1	77.3
	RYE	53.6	62.9	72.3	84.2	96.0	108.7	118.6	132.8	146.1	159.4	174.1	189.7	204.9	220.6	239.0	257.1	275.1	295.2	316.3
TETRAPLOID ITALIAN	RYEGRASS	23.7	27.9	32.0	37.3	42.5	47.3	52.5	58.8	64.7	70.6	77.1	84.0	90.8	97.7	105.9	113.9	121.9	130.8	140.1
DIPLOID ITALIAN	RYEGRASS	18.1	21.3	24.4	28.5	32.5	36.1	40.1	44.9	49.4	53.9	58.8	64.1	69.3	74.6	80.8	86.9	93.0	99.8	106.9
SORGHUM	SADAN	44.2	51.9	59.6	69.5	79.2	88.0	97.8	109.5	120.5	131.4	143.6	156.5	169.0	182.0	197.2	212.0	226.9	243.5	260.9
	SOYBEANS	39.2	46.0	52.9	61.6	70.2	78.0	86.7	97.1	106.8	116.5	127.3	138.7	149.8	161.5	174.8	188.0	201.2	215.9	231.3
	TRITICAL	39.5	46.3	53.2	62.0	70.7	78.6	87.3	97.8	107.5	117.3	128.1	139.7	150.8	162.4	176.0	189.3	202.5	217.3	232.9
	WHEAT	47.1	55.2	63.5	74.0	84.3	93.7	104.1	116.6	128.3	140.0	152.9	166.6	180.0	193.8	209.9	225.8	241.6	259.3	277.6
KINGS	ALFAMATE MIX	15.7	18.5	21.2	24.7	28.2	31.4	34.8	39.0	42.9	46.8	51.1	55.7	60.2	64.8	70.2	75.5	80.8	86.7	92.9
KINGS	HILLSIDE MIX	17.6	20.7	23.7	27.7	31.5	35.0	38.9	43.6	48.0	52.3	57.2	62.3	67.3	72.5	78.4	84.0	90.3	96.9	103.9
KINGS	MIX	16.1	18.9	21.7	25.3	28.8	32.1	35.8	39.9	43.9	47.9	52.3	57.0	61.5	66.3	71.8	77.2	82.6	88.7	95.0
KINGS	OATS PLUS	28.5	33.5	38.5	44.8	51.1	56.8	63.1	70.7	77.7	84.8	92.6	100.9	109.0	117.4	127.2	136.8	146.4	157.1	168.3
KINGS	SUPREME MIX	17.2	20.2	23.2	27.0	30.8	34.2	38.0	42.6	46.9	51.1	55.8	60.9	65.7	70.8	76.7	82.5	88.2	94.7	101.5
KINGS	TRITICAL PLUS	34.5	40.4	46.5	54.2	61.7	68.6	76.2	85.4	93.9	102.5	111.9	122.0	131.8	141.9	153.7	165.3	176.9	189.8	203.4

# Seeding Rate

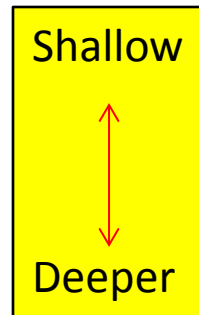
- ✓ Calibrate drill and refer to seed chart for setting
- ✓ Slide seed rate handle to # setting for seed rate
- ✓ Check RANGE = HIGH or LOW
- ✓ Move handle beyond setting and then bring it back to the correct position

Align arrow on handle  
With # on sticker, tighten  
handle



# Setting Seed Depth

- ✓ Remember to have the InterSeeder leveled for planting
- ✓ Run the opening coulter at desired seed depth or deeper
- ✓ Double disk opener depth is set by the “T” handle near the packing wheel
- ✓ Move “T” handle forward towards the tractor to shallow the seed depth
- ✓ Move “T” handle rearward away from the tractor to deepen the seed depth
- ✓ **CHECK SEED DEPTH OFTEN AS SOIL CONDITIONS CONSTANTLY CHANGE**



“T” Handle

- Forwards = Shallow
- Rearwards = Deeper

# The Seed Box

- ✓ **KEEP THE SEEDBOX CLEAN WHEN NOT IN USE**
- ✓ The seed box uses a sponge meter to regulate seed
- ✓ Keep seed clean of debris and foreign material that could damage sponges
- ✓ Sponges can be replaced if damaged by scraping off old sponge and gluing on new
- ✓ Contact InterSeeder for replacement parts and adhesive
- ✓ Sweep out seed box service panel when not in use to prevent rodent damage
- ✓ Oil chains weekly that drive the seed box

Seed meter

Service Panel



# Helpful Tips

- ✓ Operate the unit between 3 and 5 mph depending on field conditions
- ✓ If you need additional weight, add water to the tanks
- ✓ Do not turn tightly with the drill in the planting position
- ✓ Use clean seed
- ✓ Calibrate to be accurate on seed rate
- ✓ Remember to add seed meter cover plates to the units removed for interseeding they will lay in the seed box and cover the sponge meter
- ✓ **WHEN USING LIQUID N, RINSE THE UNIT OFF EACH DAY OF USE TO PREVENT CORROSION FROM LIQUID SPLASH ONTO THE DRILLING UNITS**